

playmobil®
3029 USA/CDN
4067

WARNING:
CHOKING HAZARD
Contains a small ball and small parts.
Not for children under 3 years.

"Ne concerne que les USA"

Wichtige Unterlagen, bitte sorgfältig aufbewahren !
Important documents keep carefully !
Documents importants conservez avec soin !



D A CH L **WARNING!**

Nur unter Aufsicht und nur in flachem Wasser benutzen.

USA GB CDN M **WARNING!**

Only to be used in water in which the child is within depth and under supervision

F CDN B L CH **ATTENTION!**

À n'utiliser qu'en eau où l'enfant a pied et sous surveillance.

E MEX **ADVERTENCIA!**

Se deberá utilizar solamente en el agua, donde el niño haga pie y bajo vigilancia.

NL B **WAARSCHUWING!**

Alleen gebruiken onder toezicht, in water waarin het kind kan staan.

I CH **ATTENZIONE!**

Utilizzare solo in acque dove il bambino tocca con i piedi e sotto sorveglianza.

P **AVISO!**

Utilizar apenas em águas em que a criança tenha pé e sob vigilância.

DK **ADVARSEL!**

Må kun anvendes under opsyn og på vanddybder, hvor barnet kan bunde.

N **ADVARSEL!**

Skal kun brukes i vann som ikke er for dypt for barnet, og der barnet er under tilsyn.

S FIN **VARNING!**

Får endast användas på grunt vatten och under uppsikt av vuxen.

FIN **VAROITUS!**

Käytetään ainoastaan matalassa vedessä, jossa lapsi voi seistä ja on aikuisen valvonnassa.

H **FIGYELMEZTETÉS!**

Mély vízben nem használható! Kérjük, kizárólag szülői felügyelettel használja kis vízben!

CZ **VAROVÁNÍ!**

Používat pouze v mělké vodě a pod dohledem!

EST **HOIATUS!**

Kasutamiseks ainult vees, kus lapse jalad ulatuvad põhja ja täiskasvanu järelevalve all.

LV **BRĪDINĀJUMS!**

Lietojams tikai seklā ūdenī un uzraudzībā.

LT **DĖMESIO!**

Naudoti prižiūrint suaugusiesiems ir tokiame gylyje, kur vaikas gali stovėti.

SLO **OPOZORILO!**

Uporabljeni samo v plitvi vodi in pod nadzorom.

SK **UPOZORNENIE!**

Používať len vo vode primerane hĺbokej dieťaťu a pod dohľadom.

PL **UWAGA!**

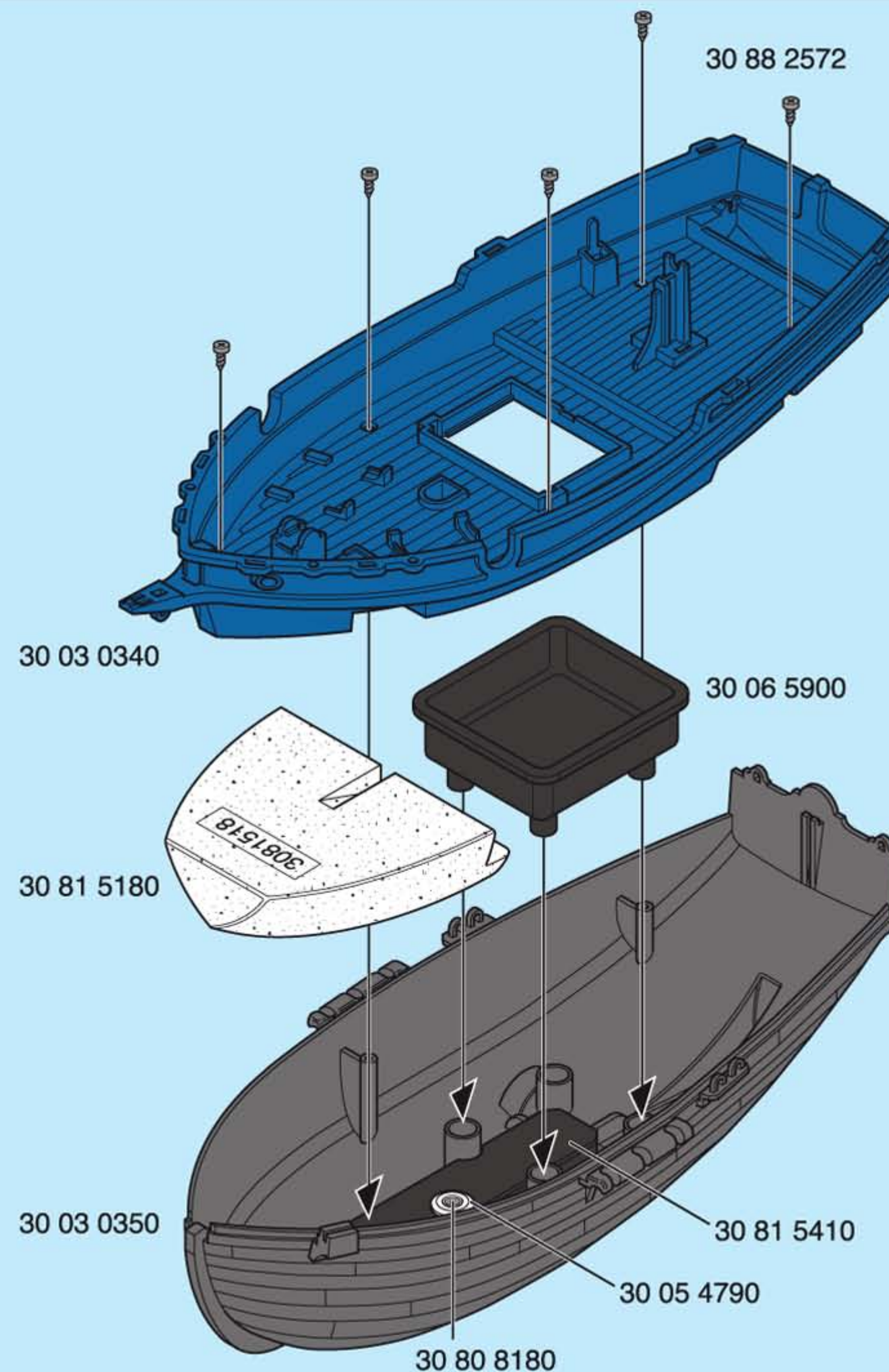
Tylko do użytku w wodzie płytkiej i pod nadzorem.

TR CY **DİKKAT!**

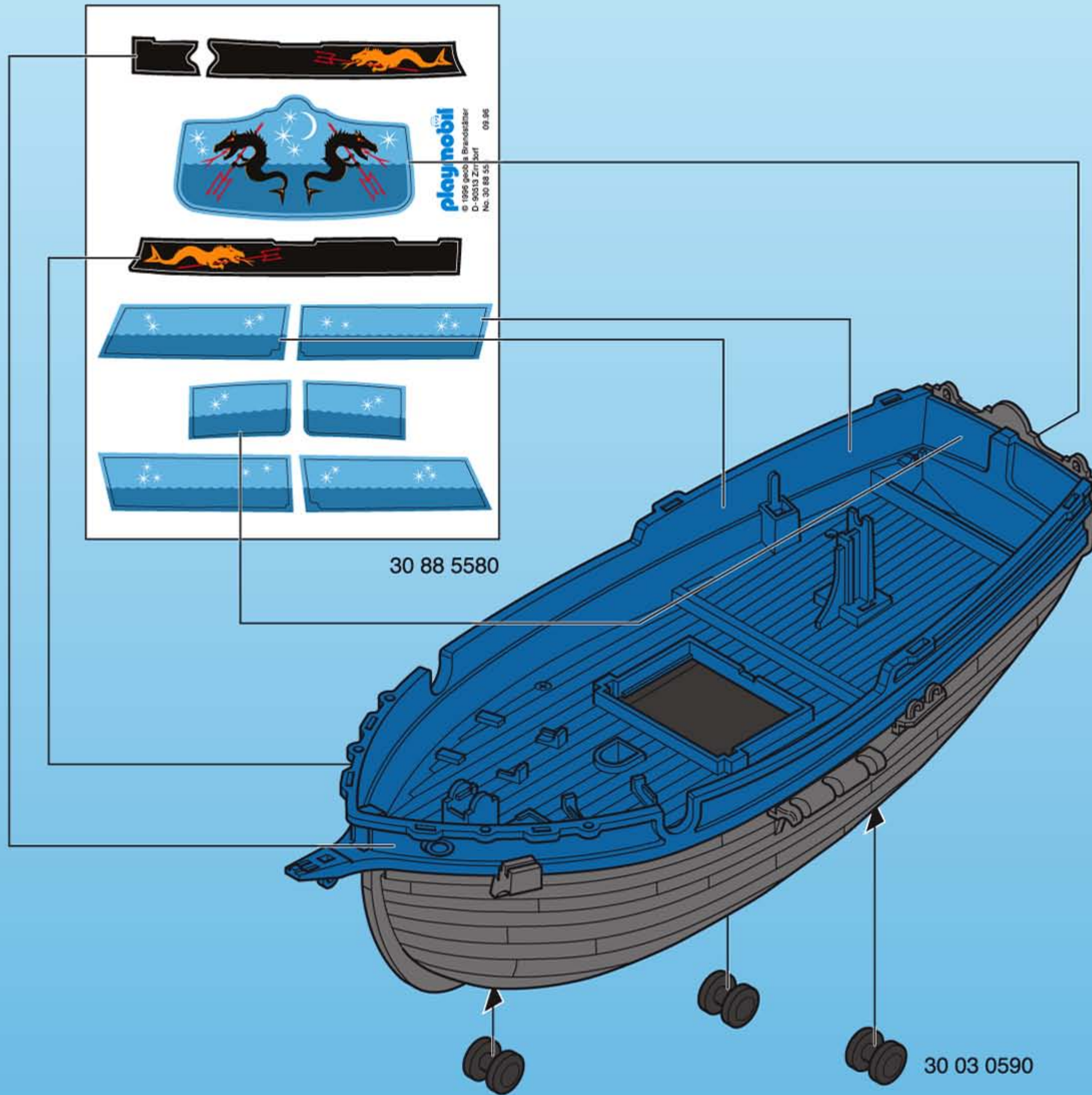
Sadece denetim altında ve sadece alçak sularda kullanın.

GR CY **ΠΡΟΣΟΧΗ!**

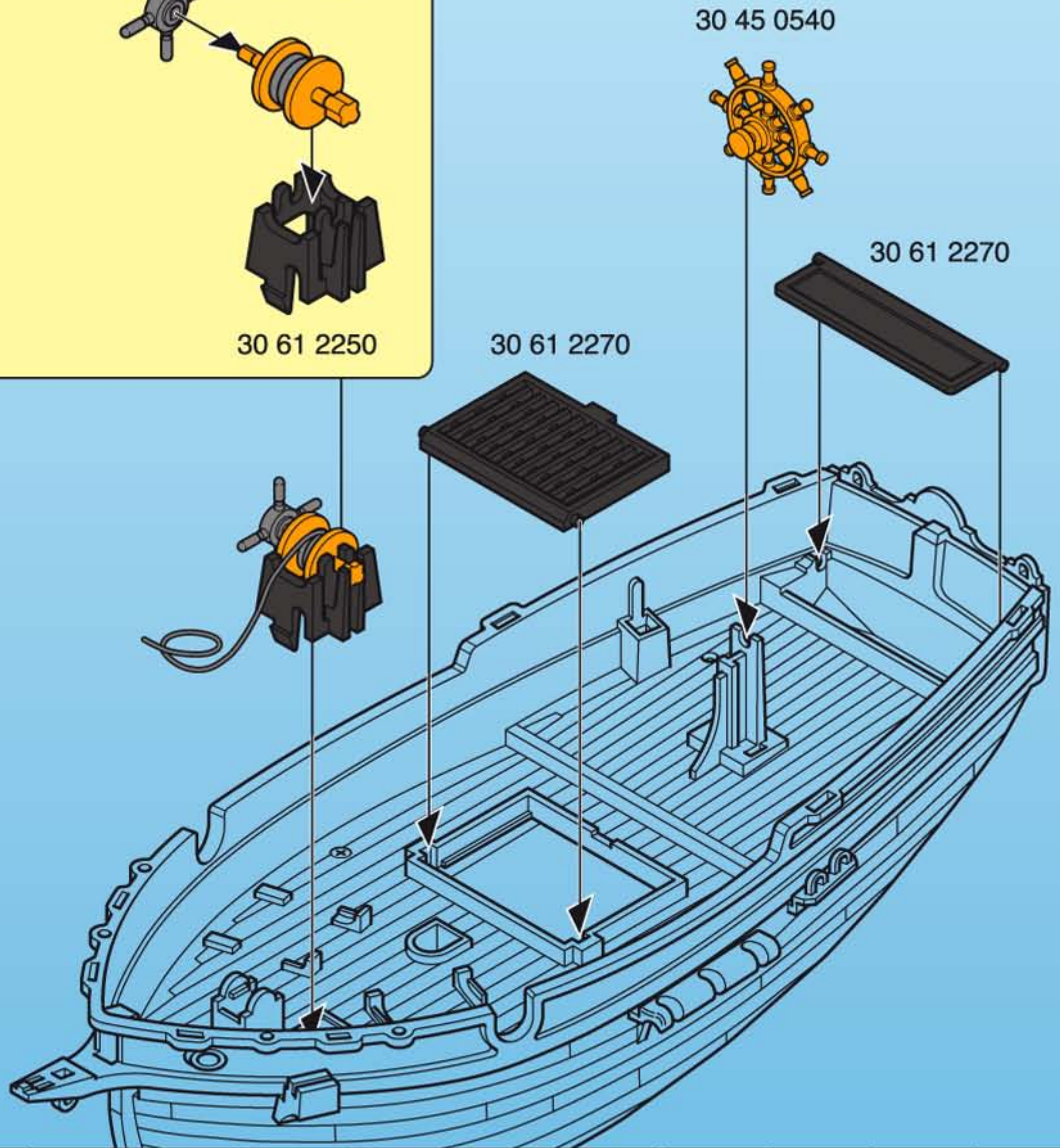
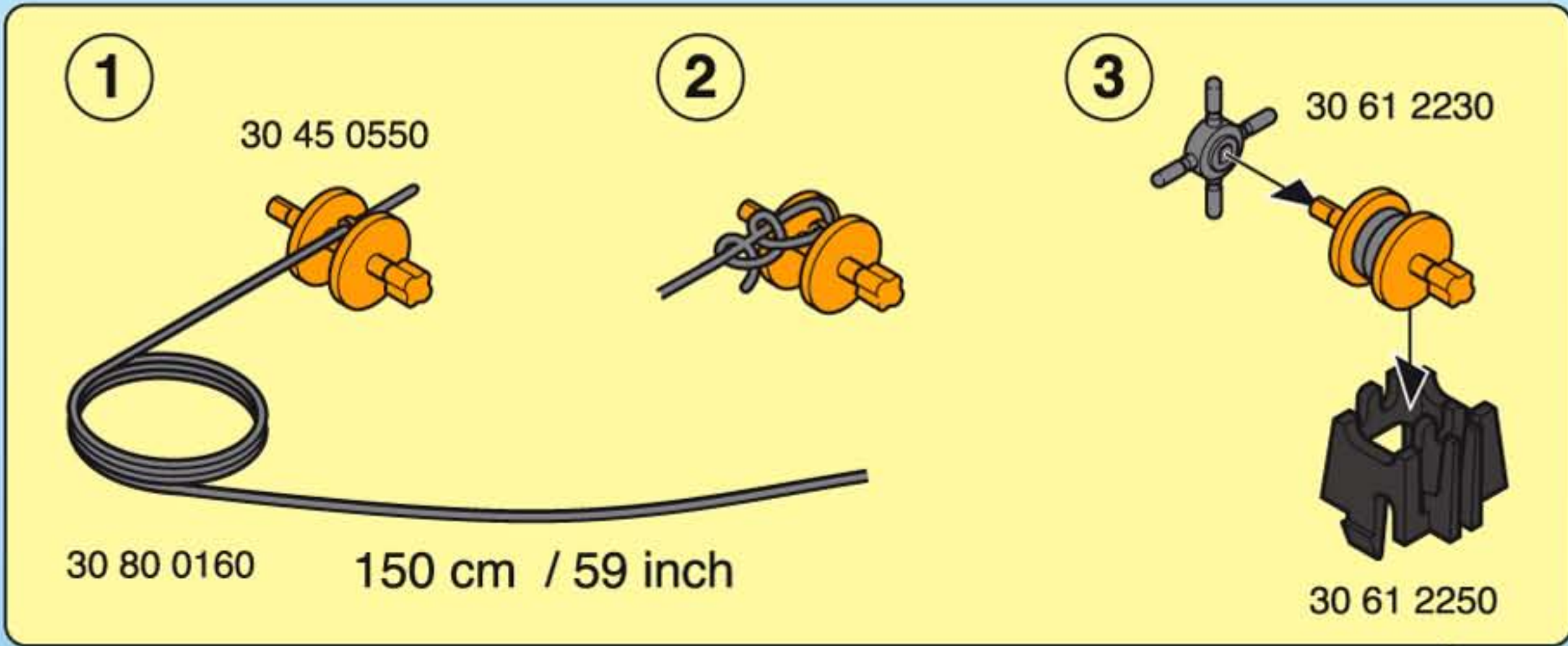
Na χρησιμοποιείται μόνο σε νερά όπου πατώνει το παιδί και κάτω από επίβλεψη.



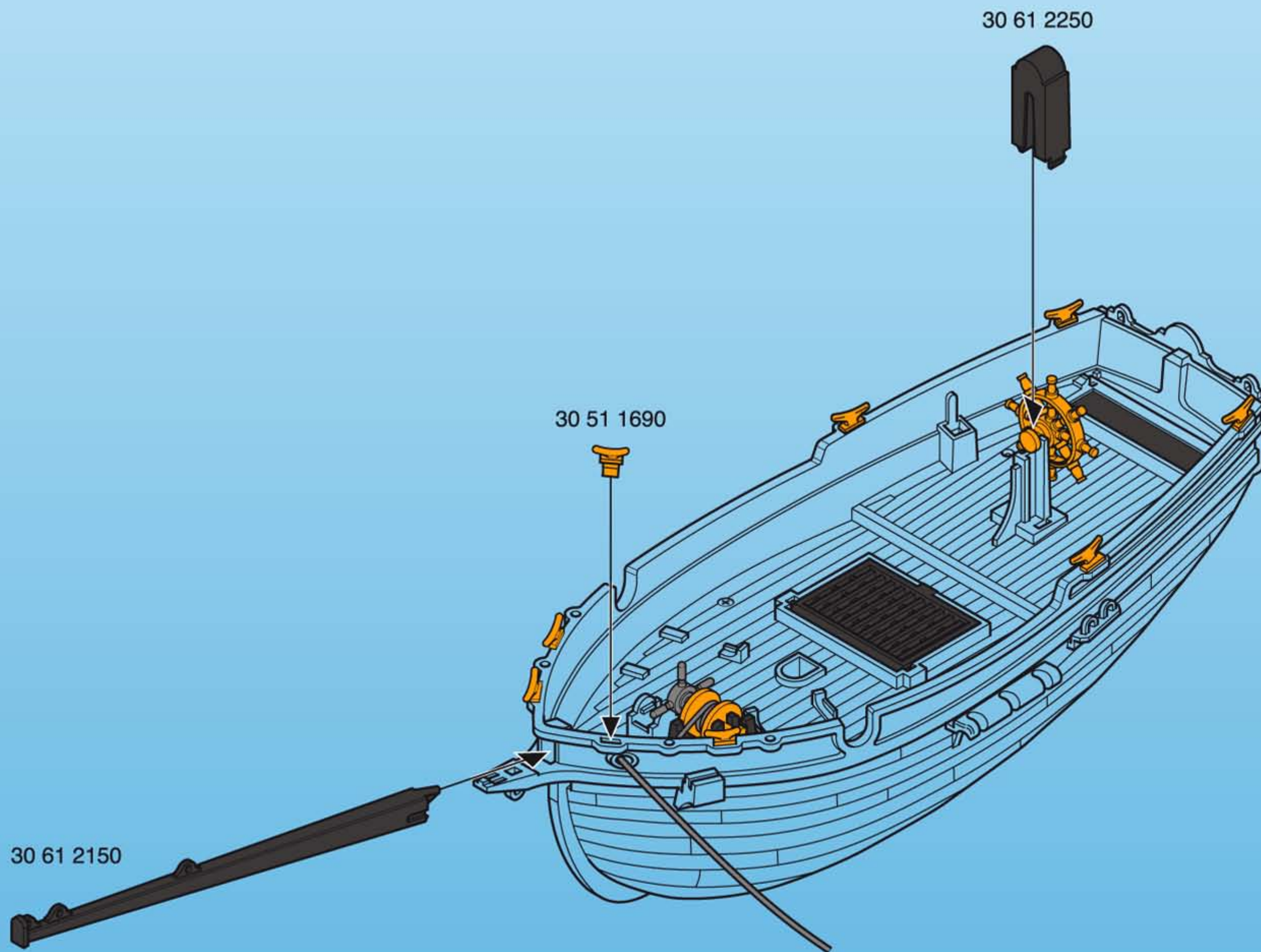
1



2



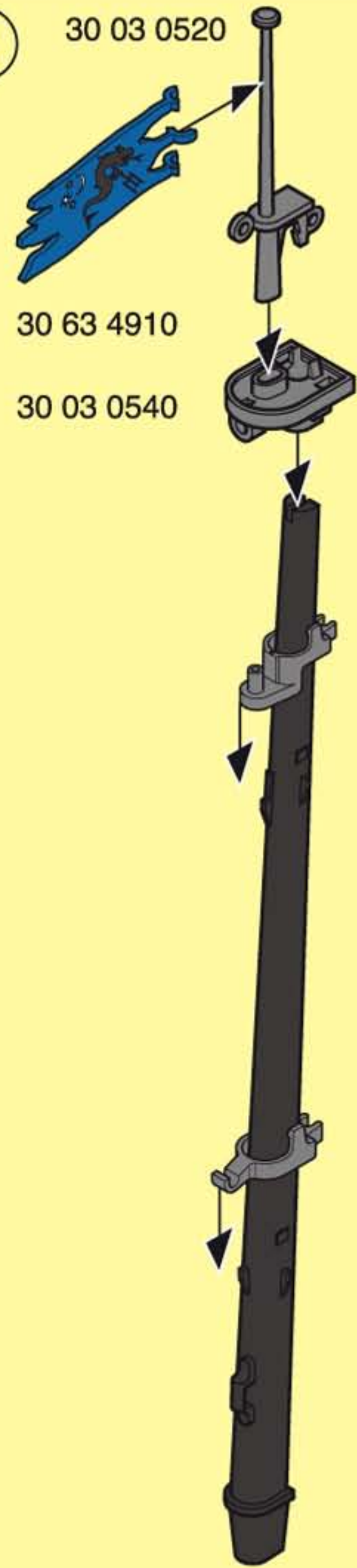
3



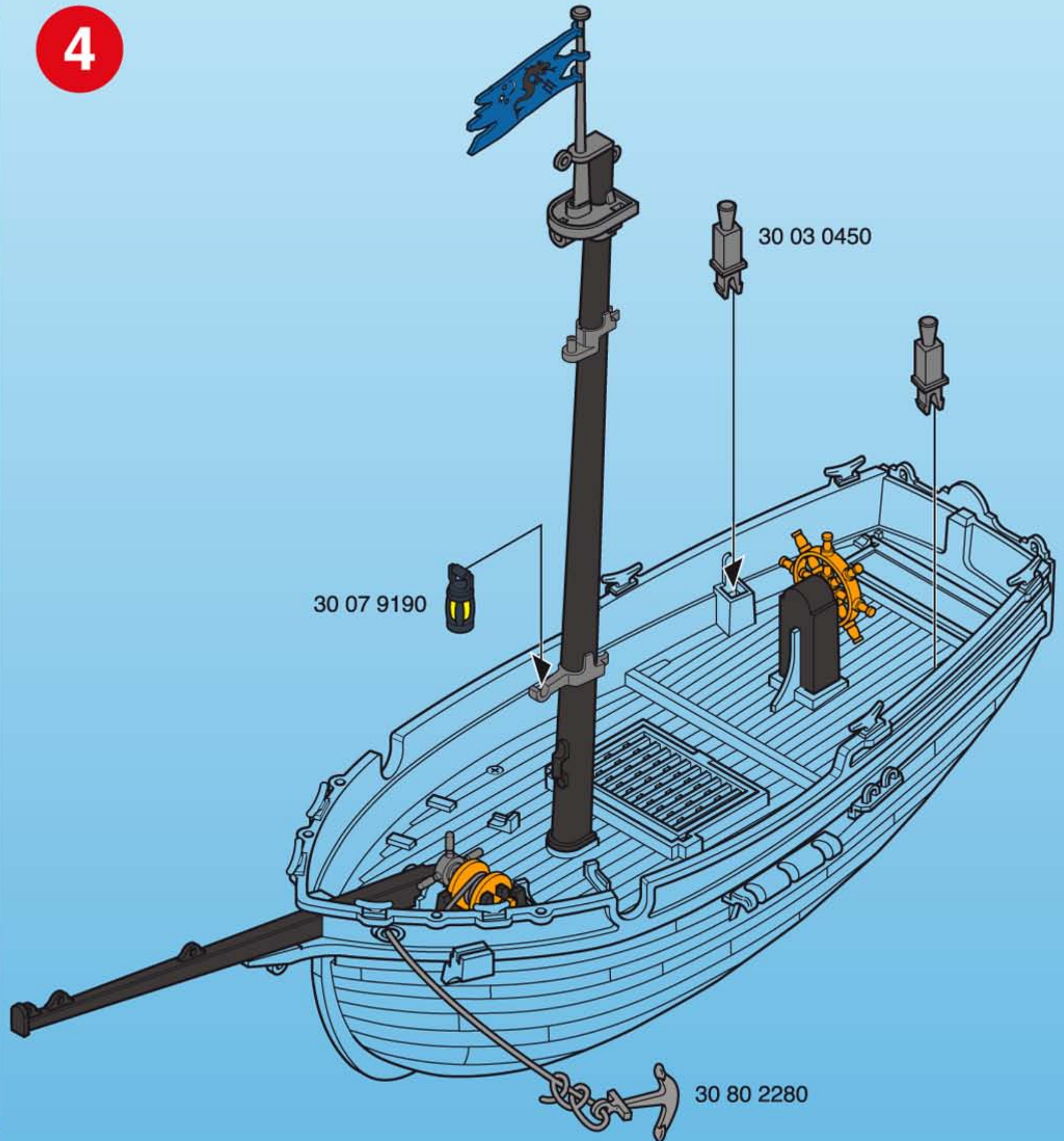
1



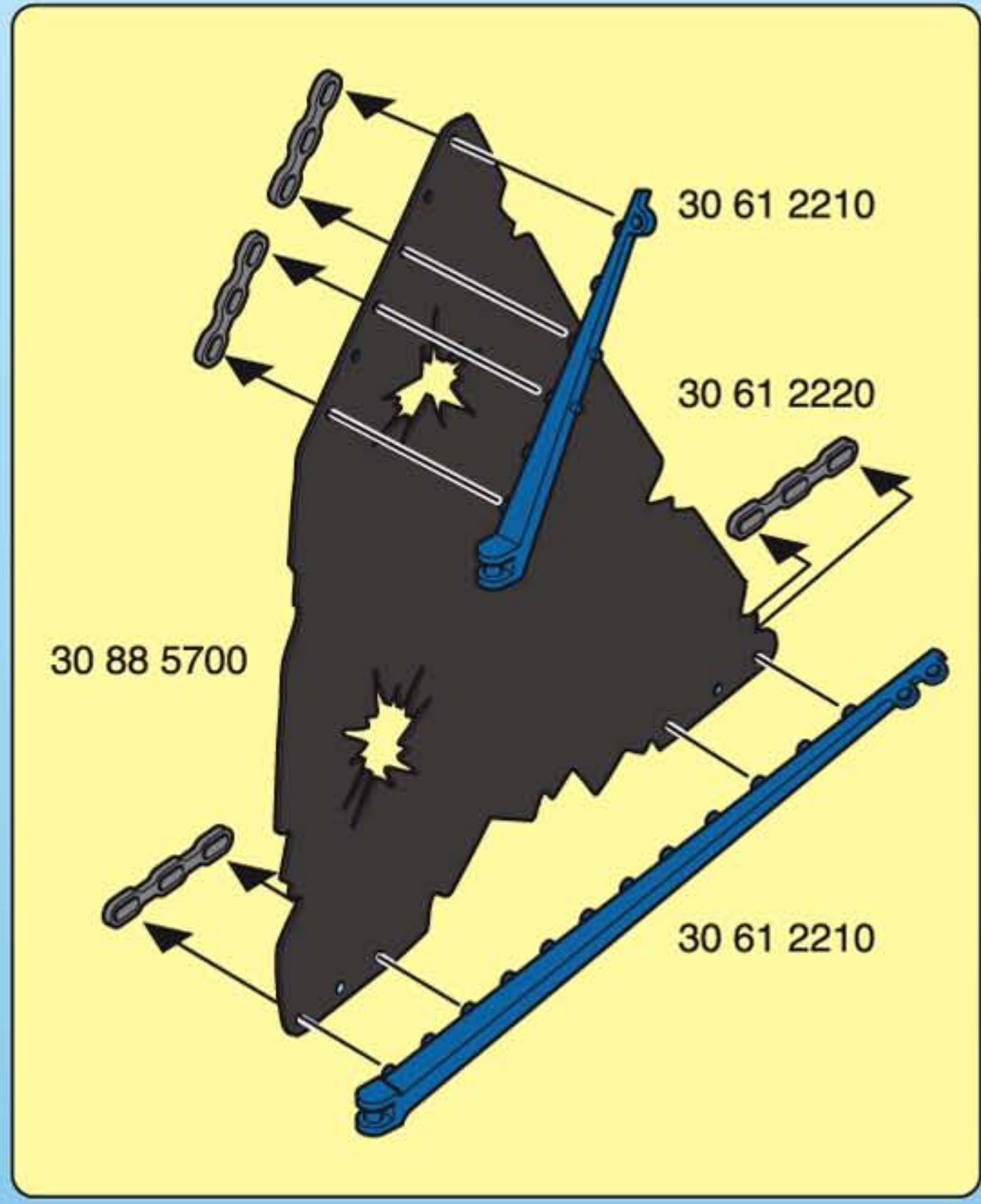
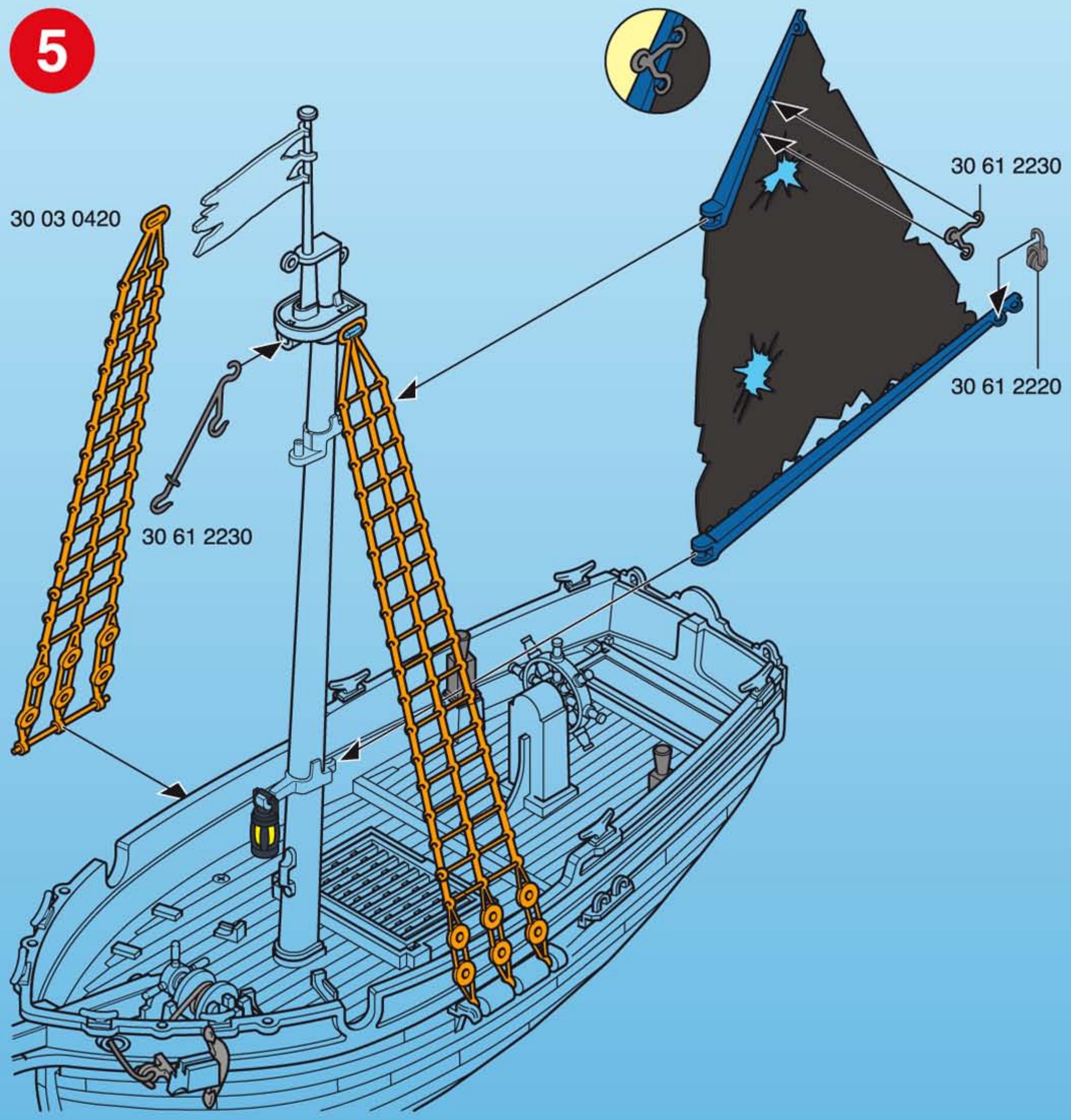
2



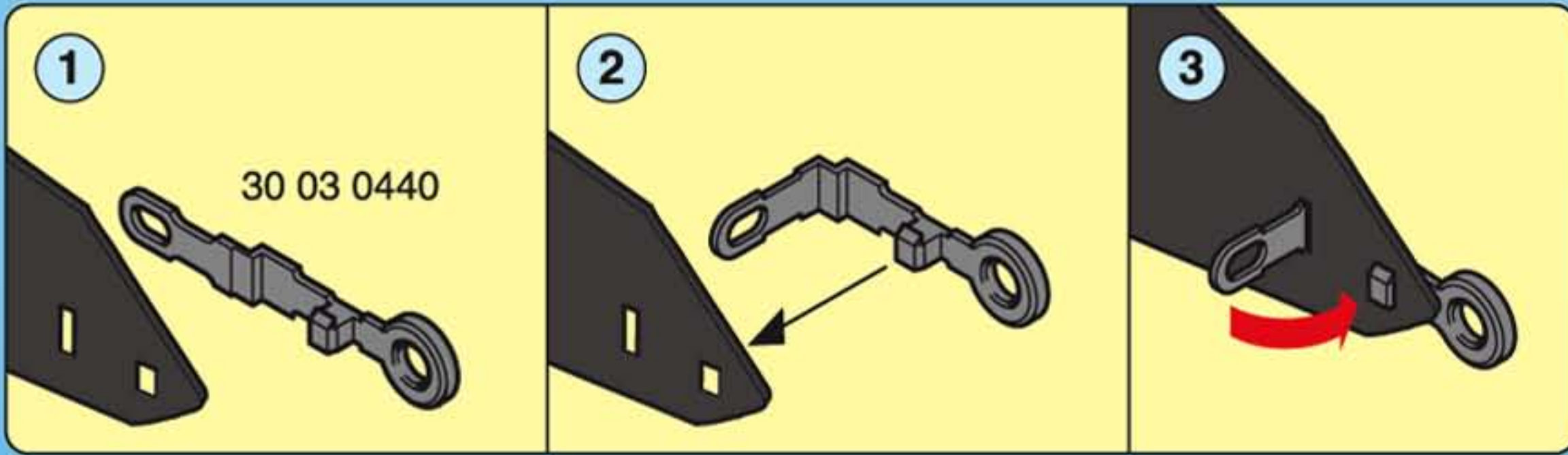
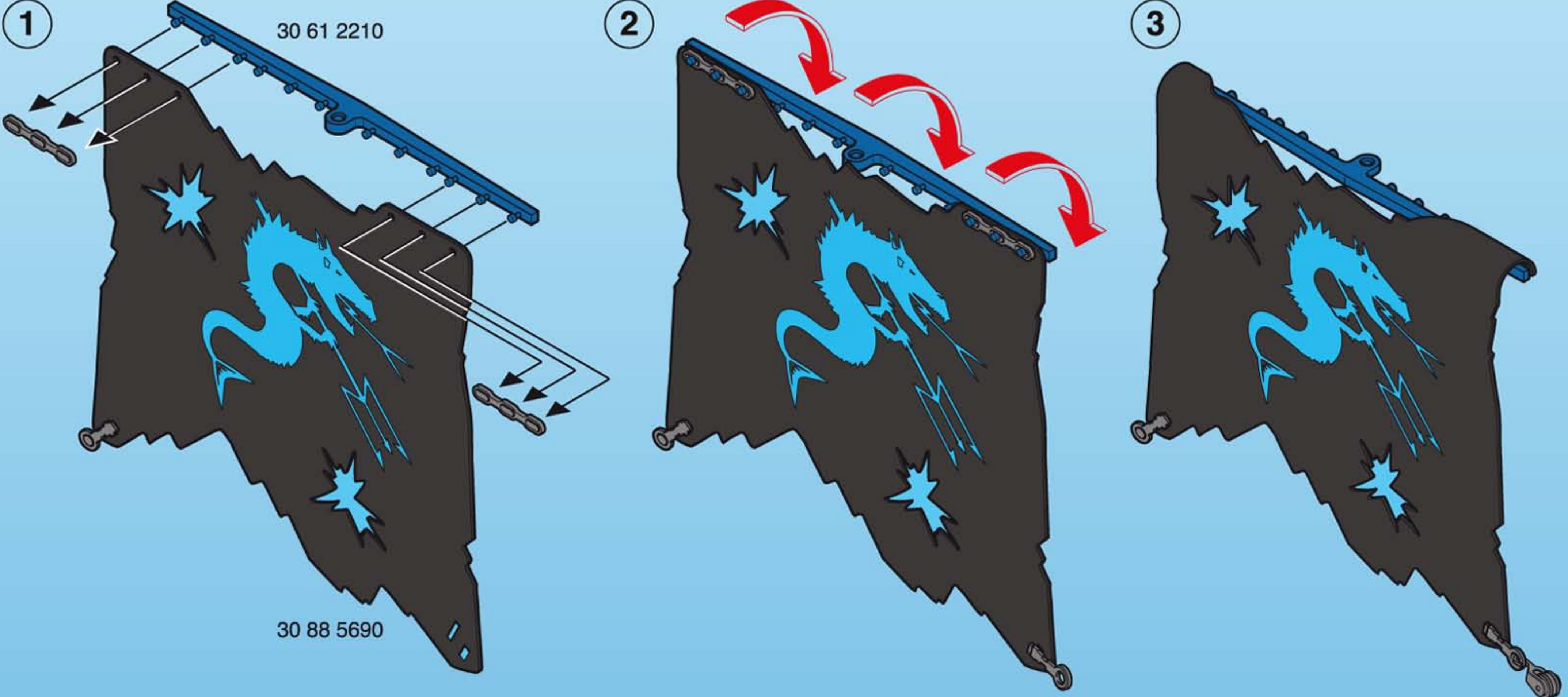
4



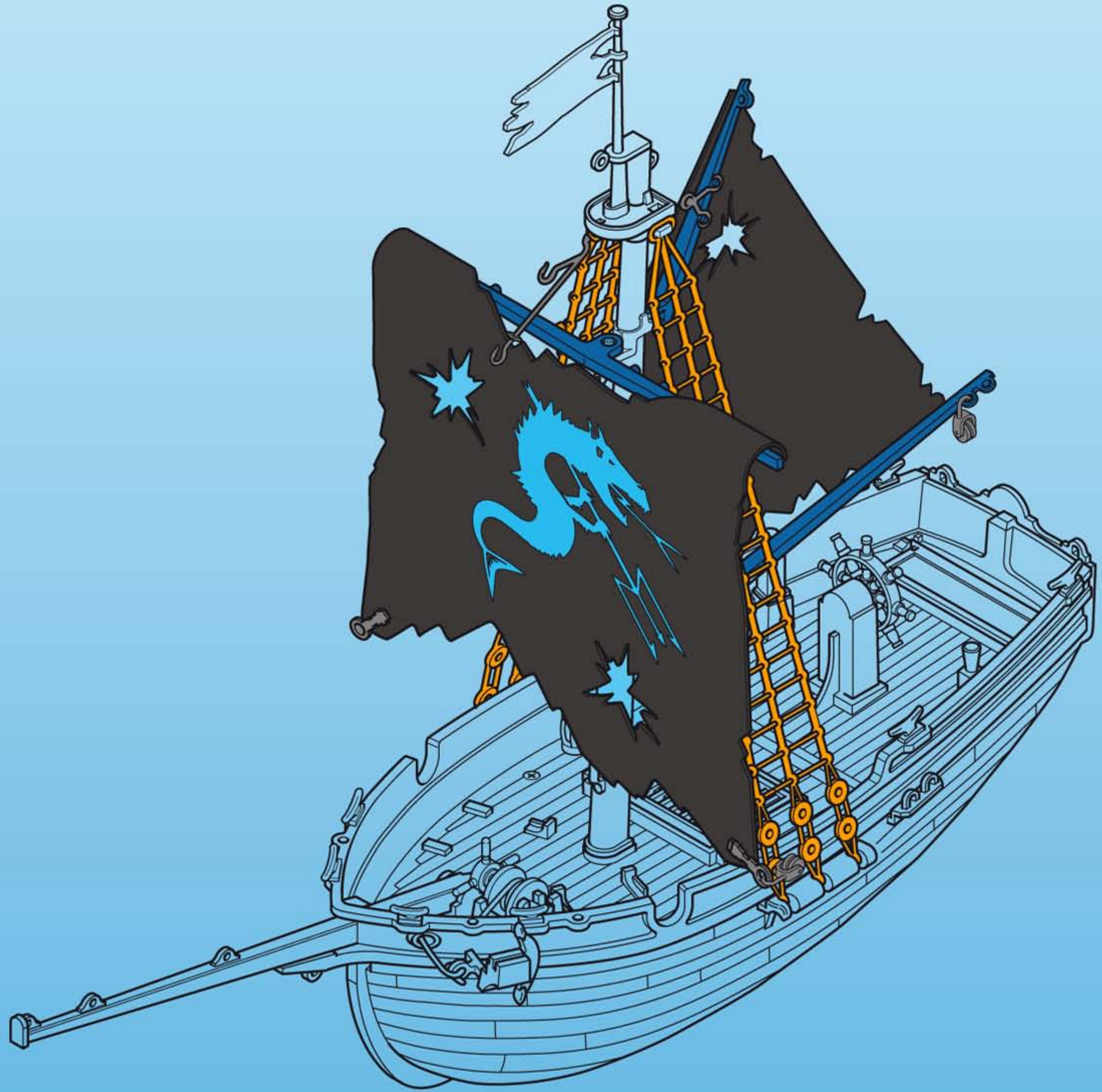
5



6



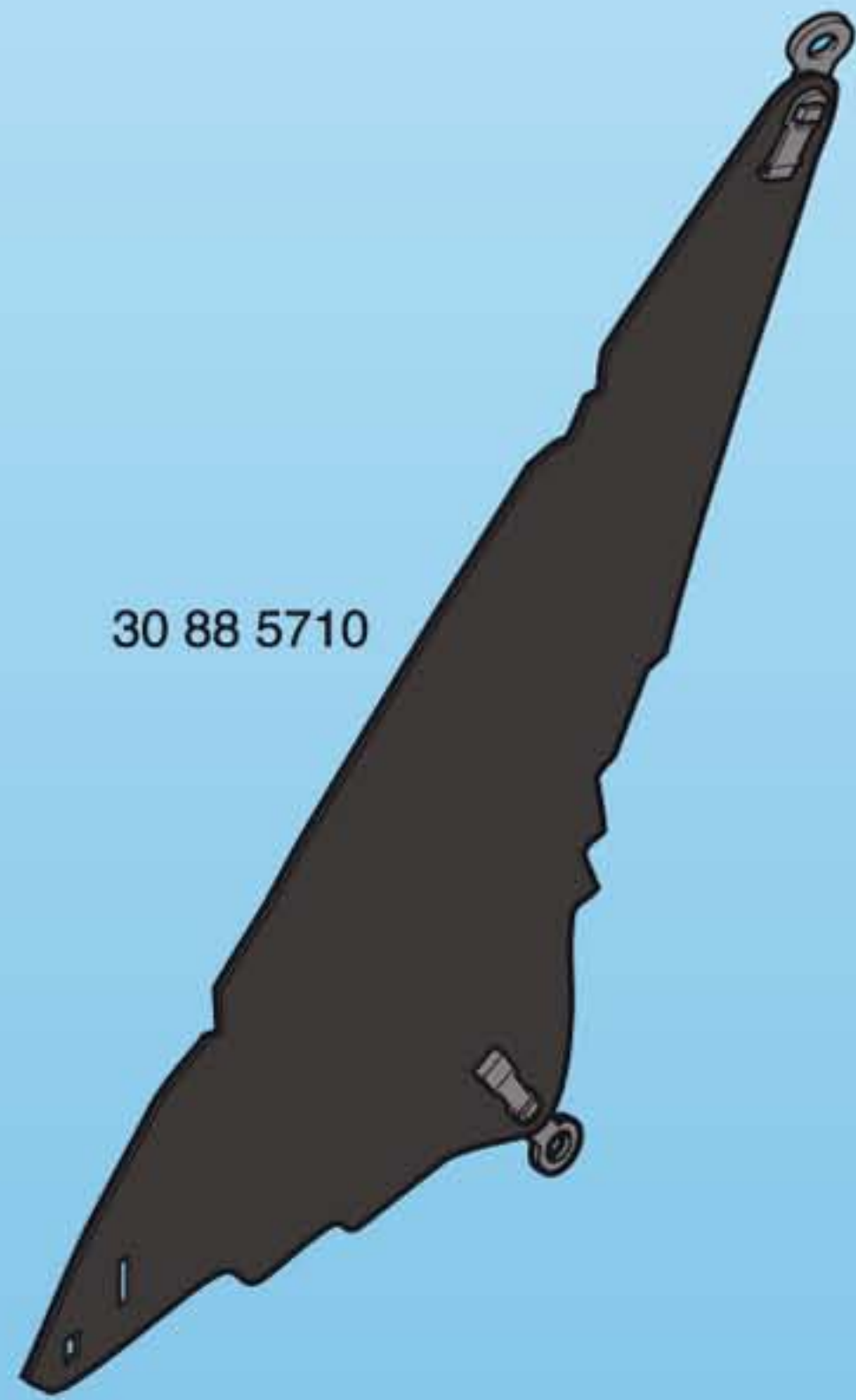
7



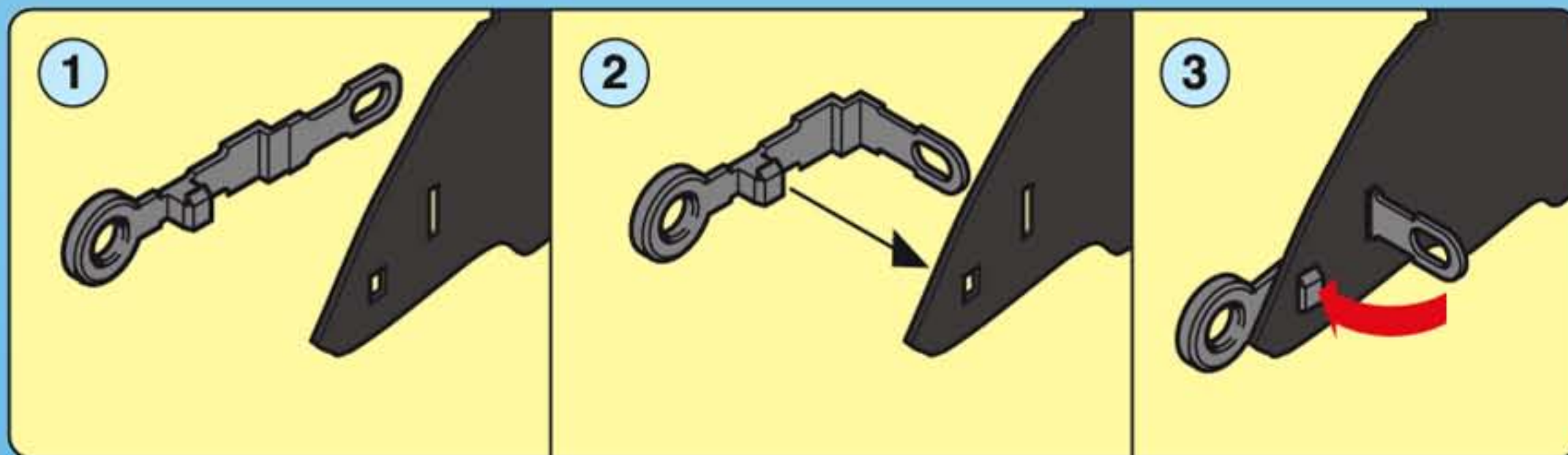
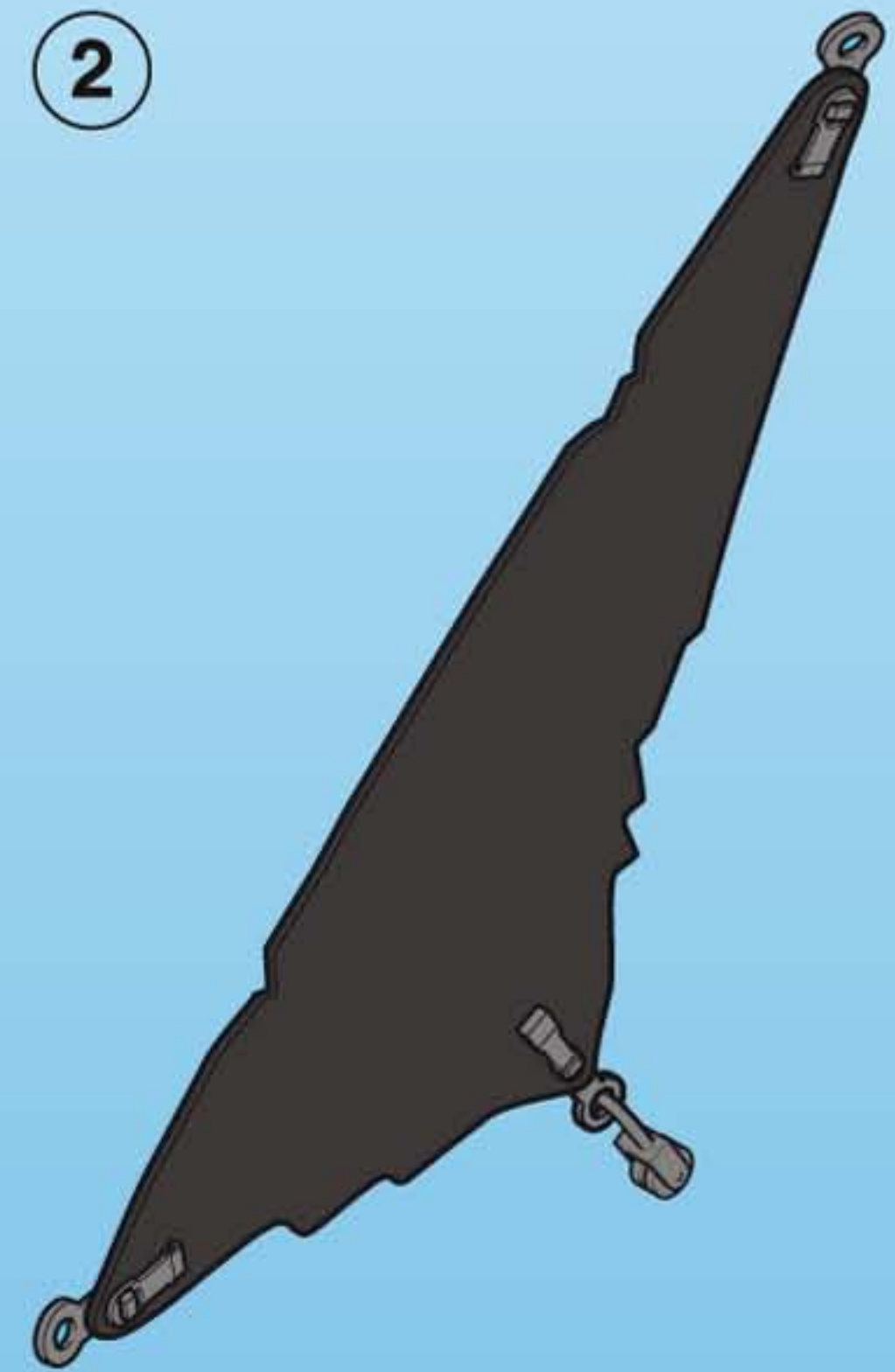
8

1

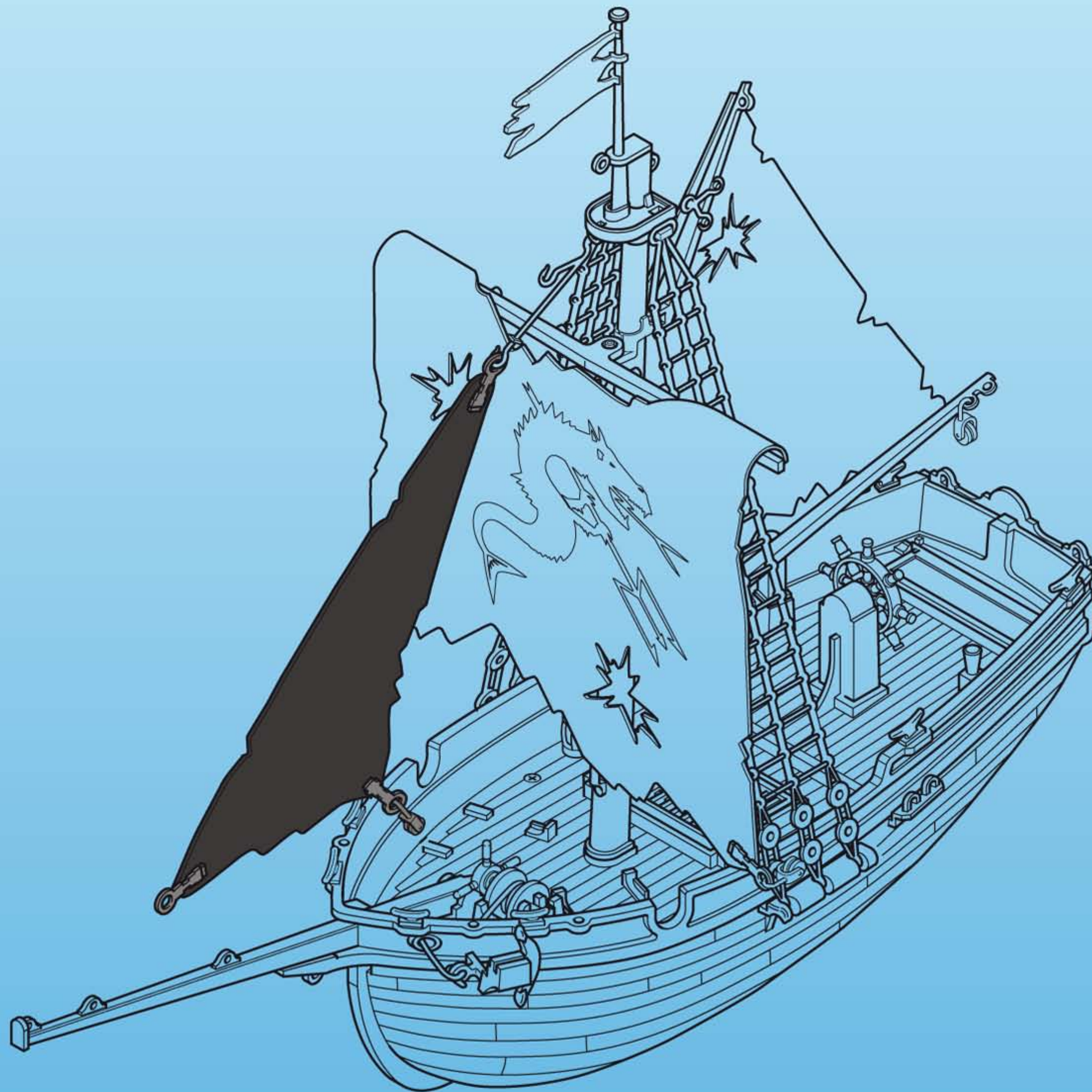
30 88 5710

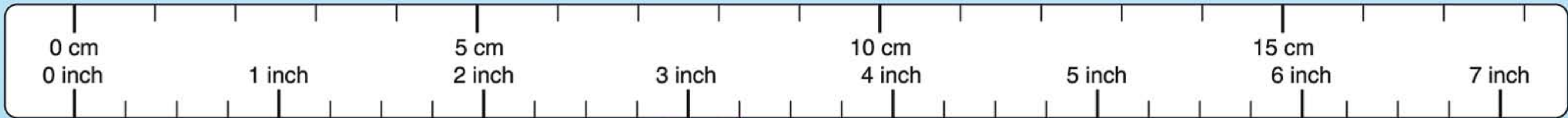


2



9

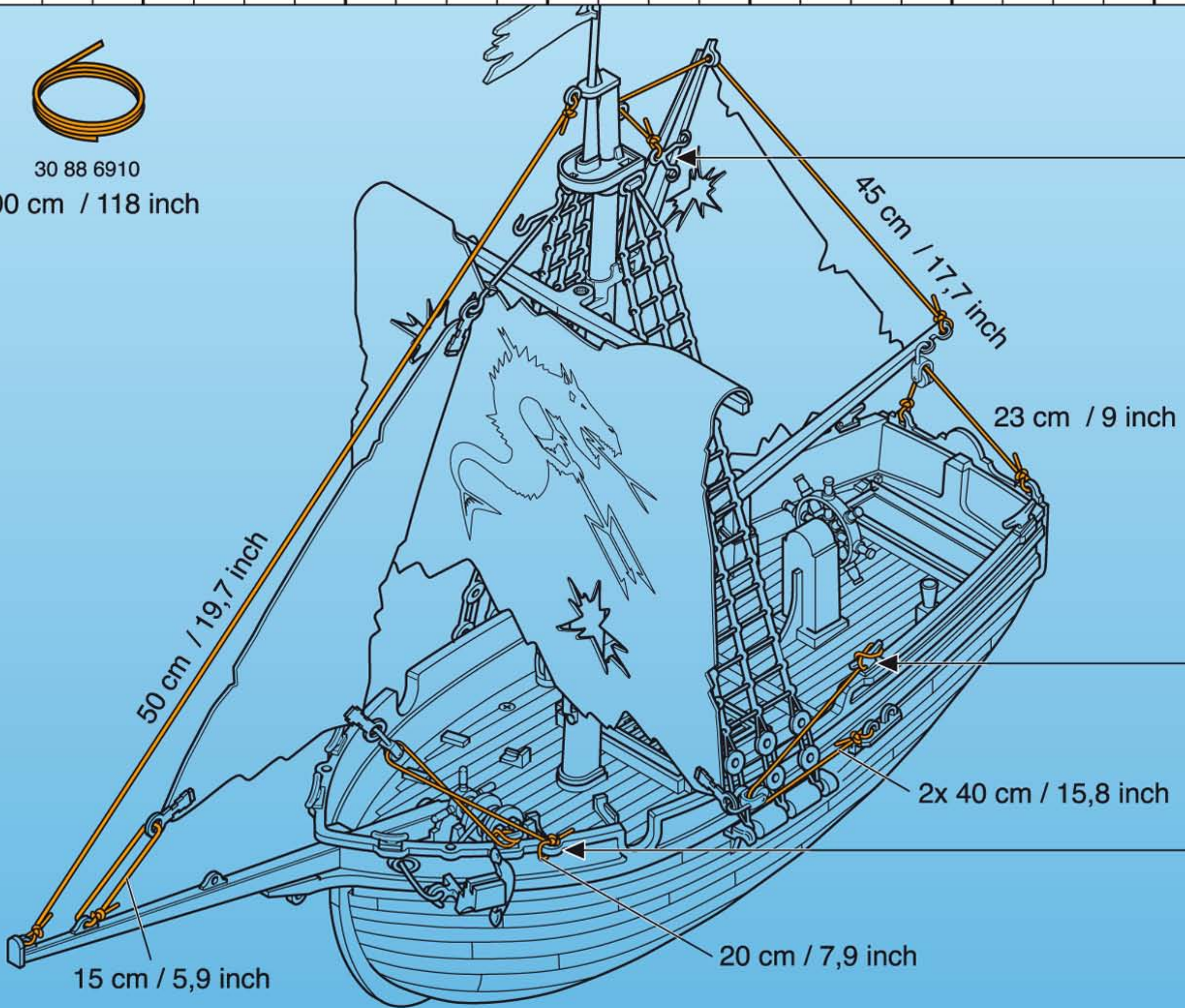




10



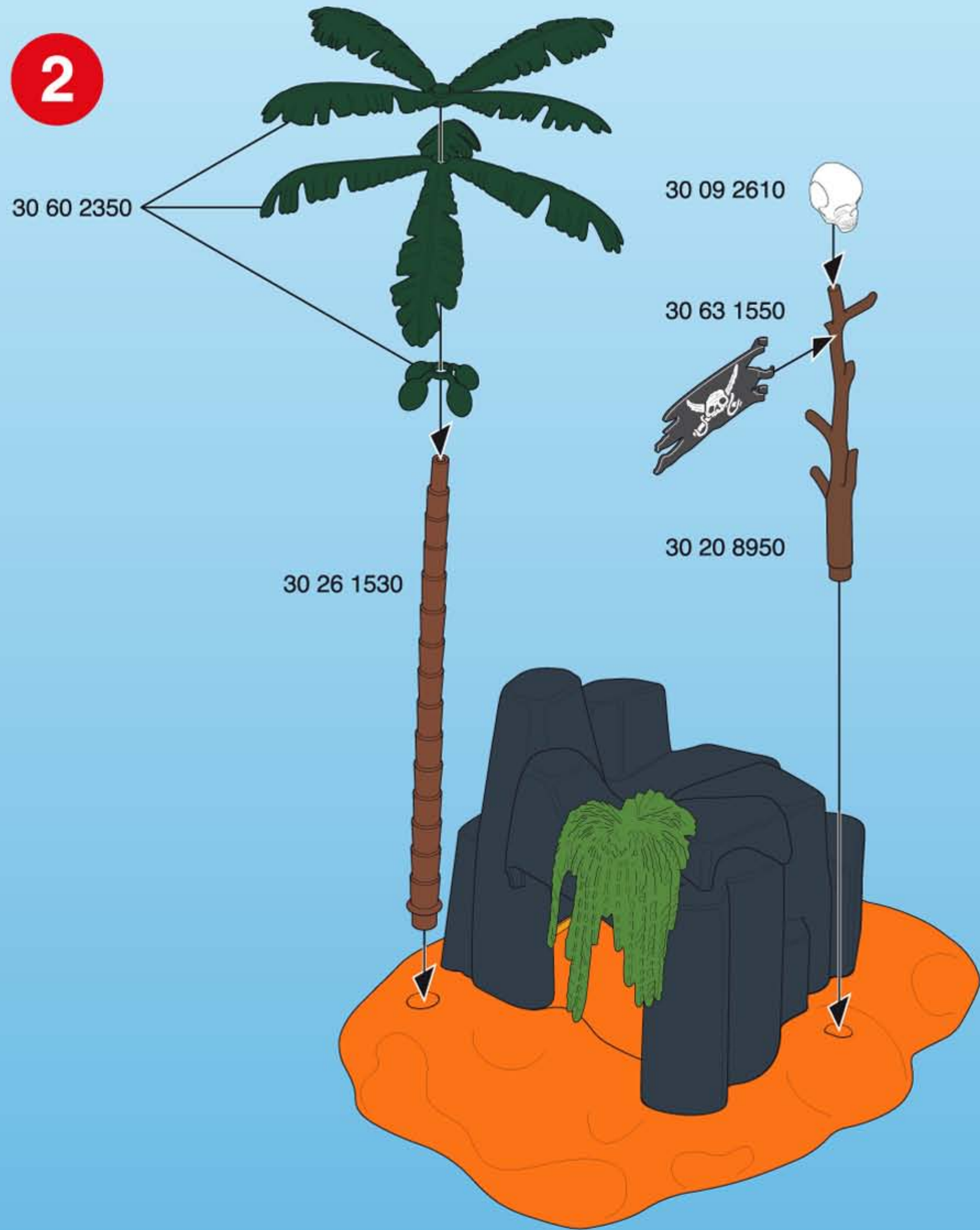
30 88 6910
300 cm / 118 inch



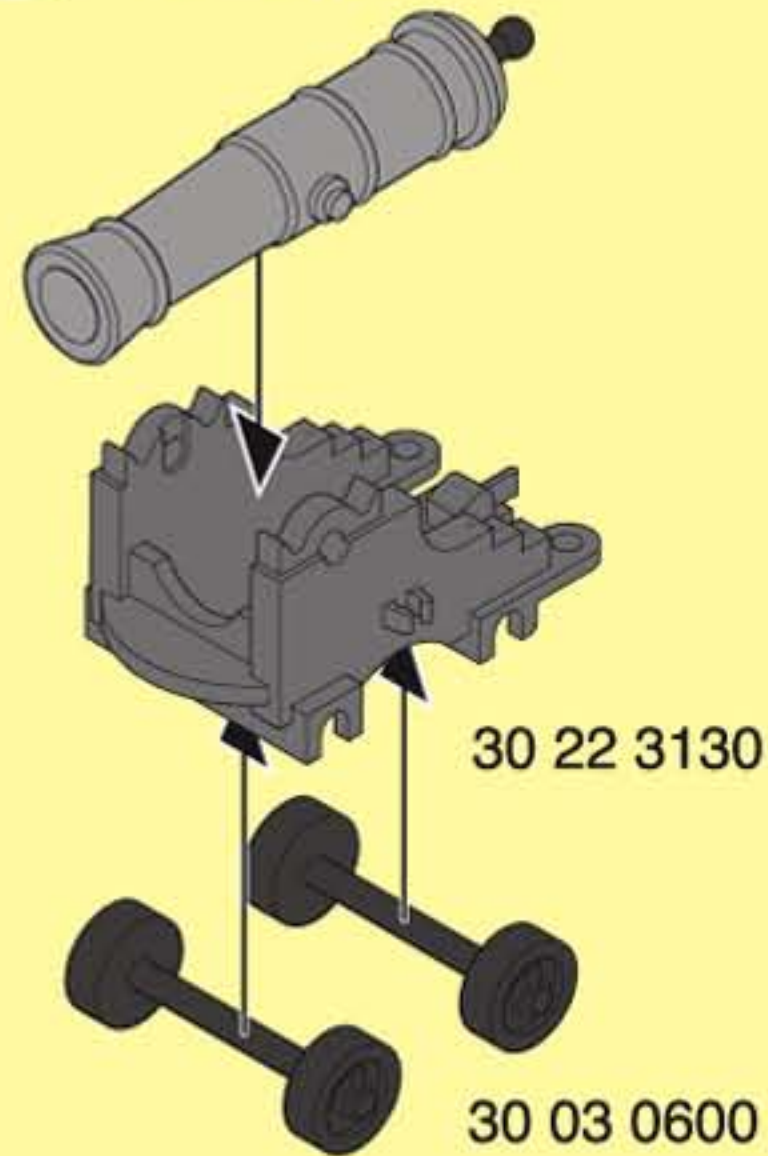
1



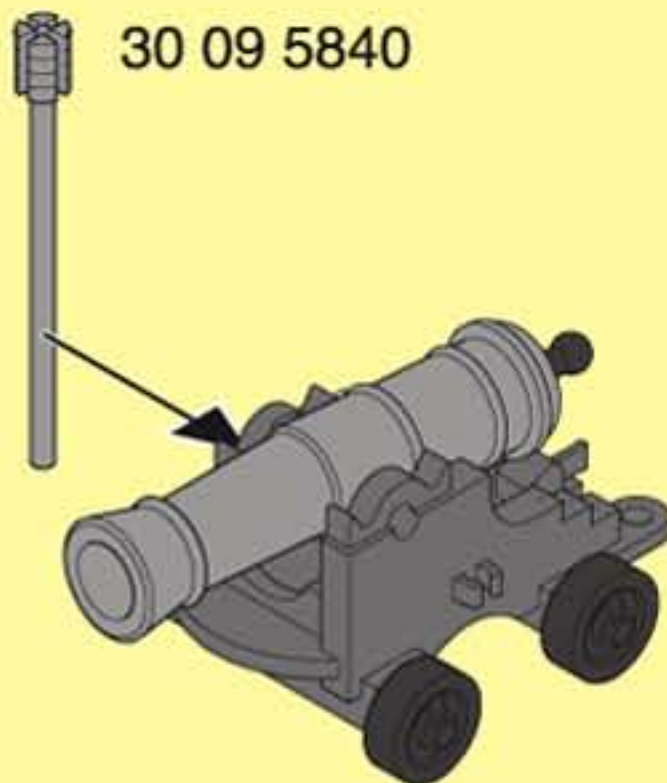
2



2x **1** 30 66 6690 USA/CDN
30 66 5740



2 30 09 5840



D A CH L **WARNING!**

Nur PLAYMOBIL Kanonenkugeln verwenden. Nicht auf Augen oder Gesicht zielen.

USA GB CDN M **WARNING!**

Only use PLAYMOBIL cannon balls ! Do not aim at eyes or face.

F CDN B L CH **ATTENTION !**

Utiliser uniquement les boulets de canons PLAYMOBIL ! Ne pas viser les yeux ou le visage

E MEX **¡ATENCIÓN!**

Usar sólo las bolas de cañón de PLAYMOBIL. No se ha de apuntar a los ojos ni a la cara.

NL B **OPGELET!**

Enkel PLAYMOBIL kanonskogels gebruiken! Niet op ogen of gezicht richten.

I CH **ATTENZIONE!**

Da usare soltanto palle di canone PLAYMOBIL. Non mirare agli occhi o al viso.

P **ATENÇÃO!**

Usar só as bolas de canhão de PLAYMOBIL. Não apontar para os olhos ou face.

DK **ADVARSEL!**

Brug kun PLAYMOBIL kanonkugler! Sigt ikke mod øjne eller ansigt.

N **ADVARSEL!**

Bruk kun Playmobil kanon kuler! Sikt ikke på ansikt eller øyne.

S FIN **VARNING!**

Använd endast PLAYMOBILS kanonkuler! Sikta ej mot ögonen eller ansiktet.

FIN **VAROITUS!**

Käytä ainoastaan PLAYMOBIL -tykinkuulia! Älä tähtää päin silmiä tai kasvoja.

H **FIGYELEM!**

Kizárólag a PLAYMOBIL ágyúgolyókat használd! Óvd a szemeidet és az arcod!

CZ **VAROVANÍ!**

Používat jenom dělové koule PLAYMOBILU. Nemiřte na oči nebo na obličej!

EST **ETTEVAATUST!**

Kasutage ainult PLAYMOBIL kahurikuule. Ära sihi silmadesse ega näkku.

LV **BRĪDINĀJUMS!**

Izmantot tikai PLAYMOBIL lielgabala bumbiņas. Nevērst pret acīm vai seju.

LT **PERSPĖJIMAS!**

Naudokite tik PLAYMOBIL patrankos sviedinius. Netaikyti į akis arba veidą.

SLO **OPOZORILO!**

Uporabljajte samo PLAYMOBIL topovske kroglice! Ne merite v oči ali obraz.

SK **UPOZORNENIE!**

Používajte len delové gule určené pre danú sadu PLAYMOBIL. Nemieriť do očí alebo do tváre.

PL **UWAGA!**

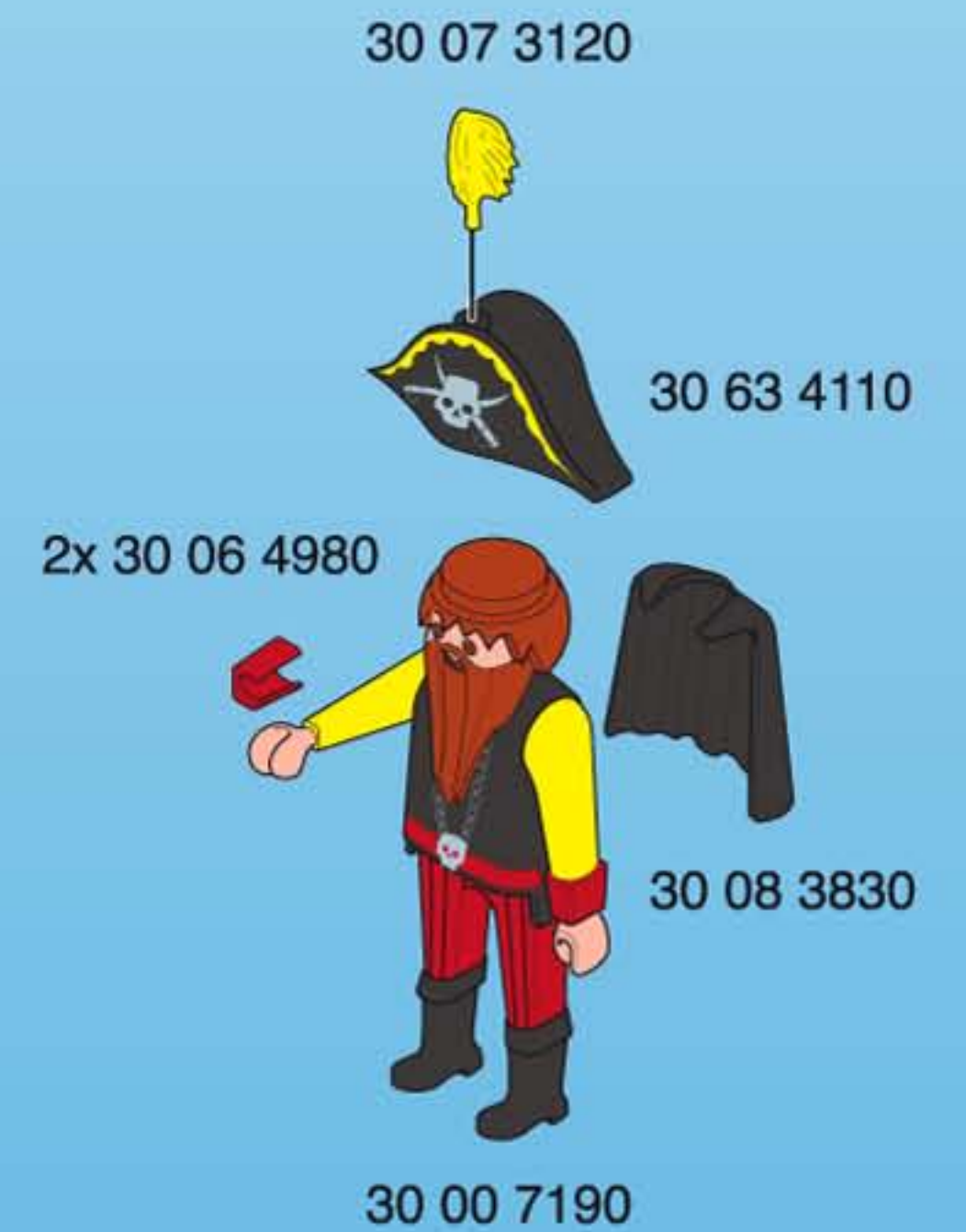
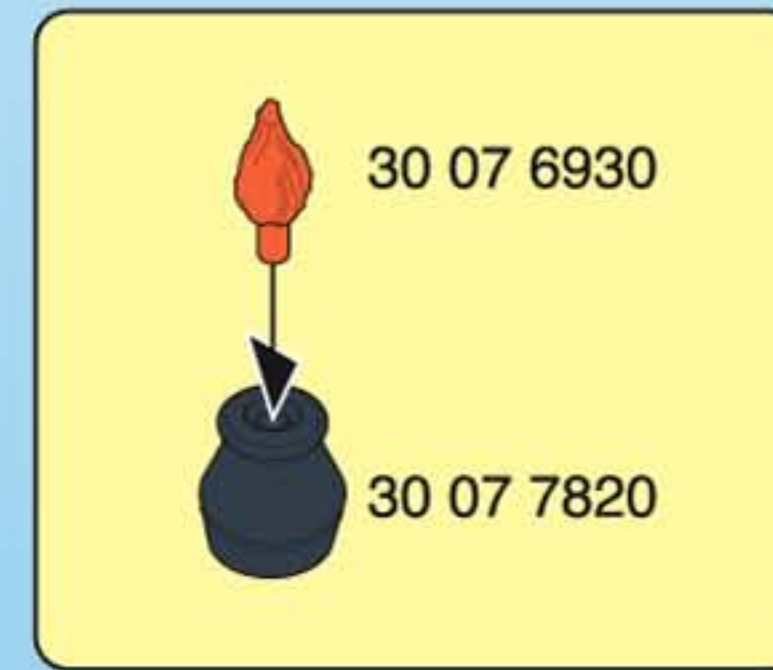
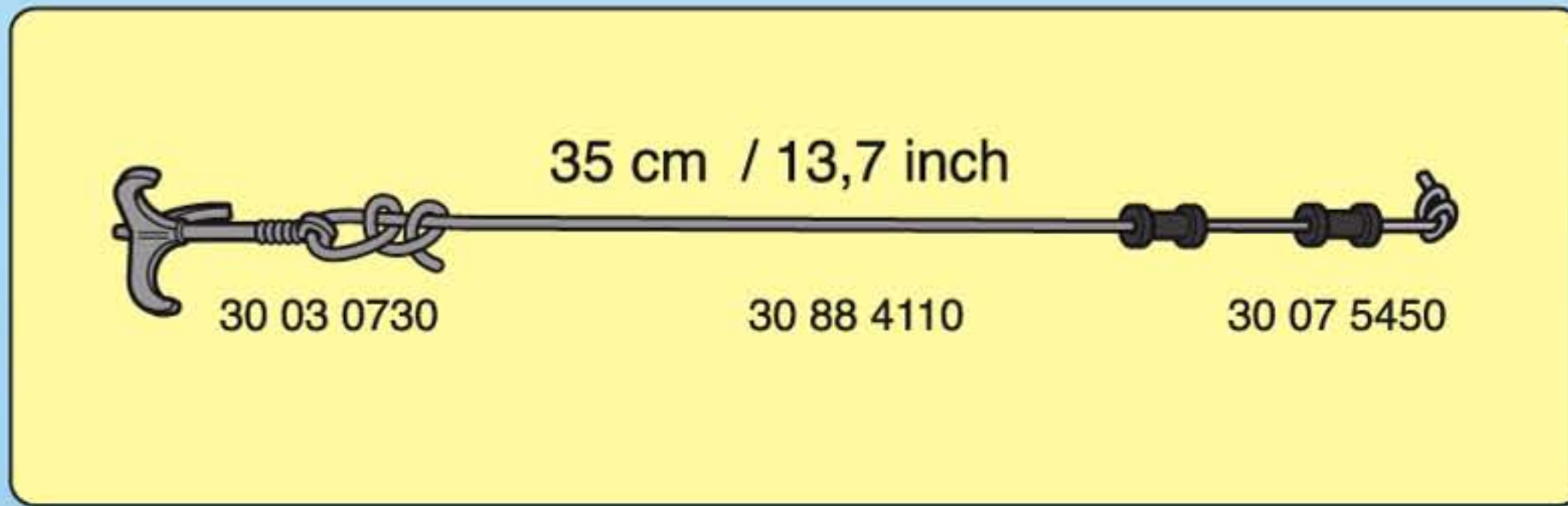
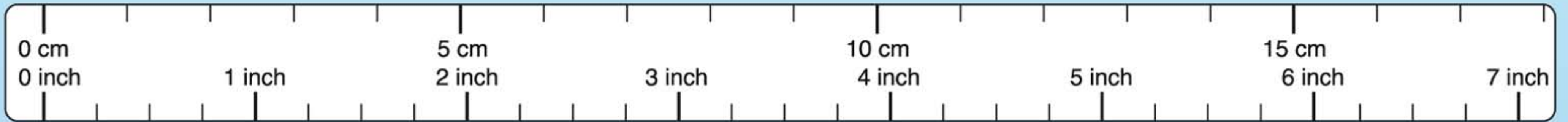
Stosować wyłącznie pociski firmy PLAYMOBIL. Niemierić do ości albo do tváre.

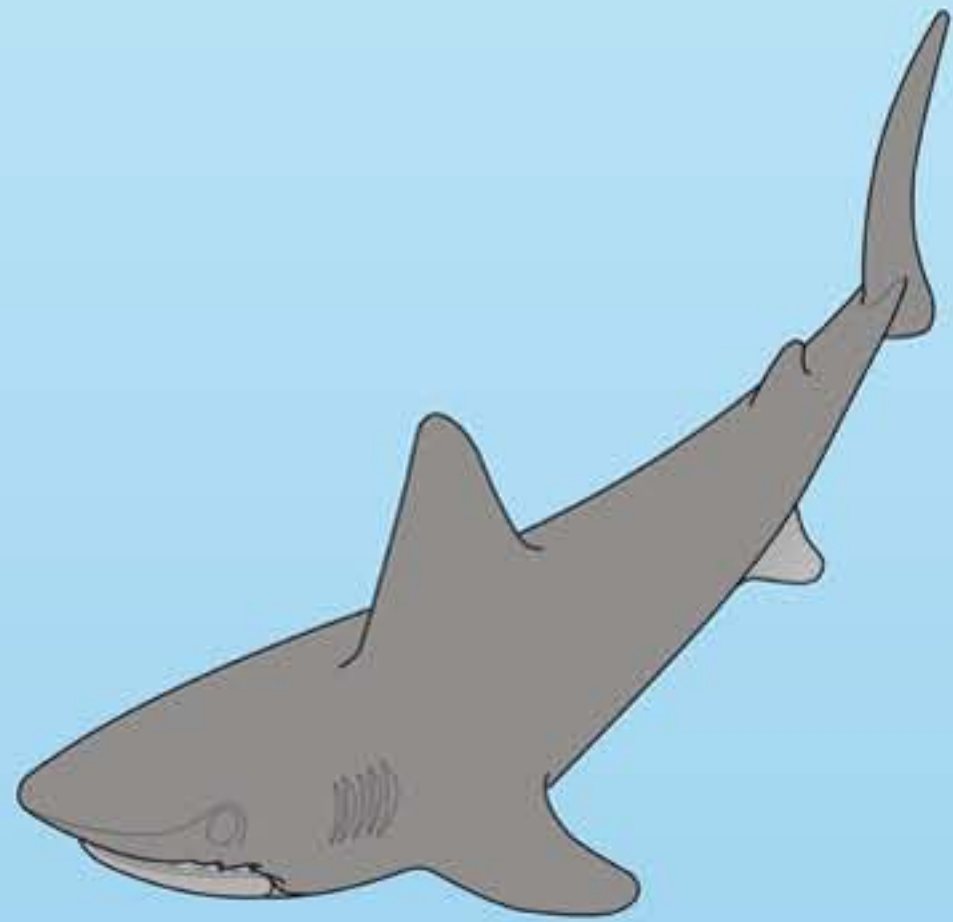
TR CY **UYARI!**

Sadece PLAYMOBIL top mermileri kullanınız. Göze veya yüze doğru tutmayınız.

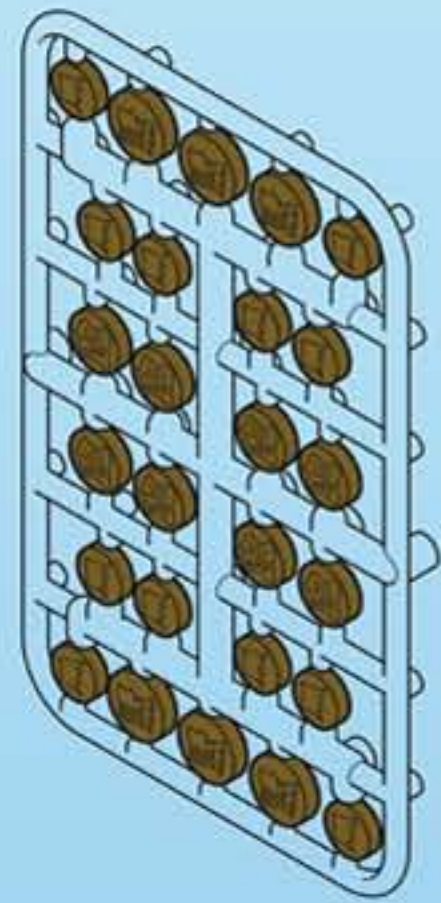
GR CY **ΠΡΟΣΟΧΗ!**

Στα κανόνια PLAYMOBIL να χρησιμοποιείτε αποκλειστικά και μόνο τις οβίδες PLAYMOBIL. Μη σκοπεύετε τα μάτια ή το πρόσωπο.

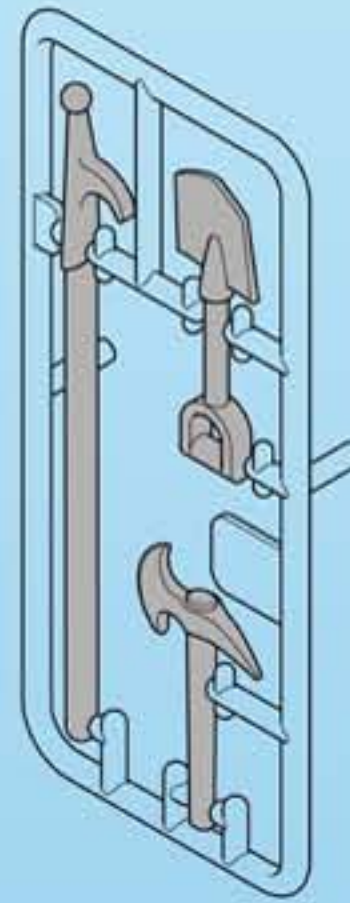




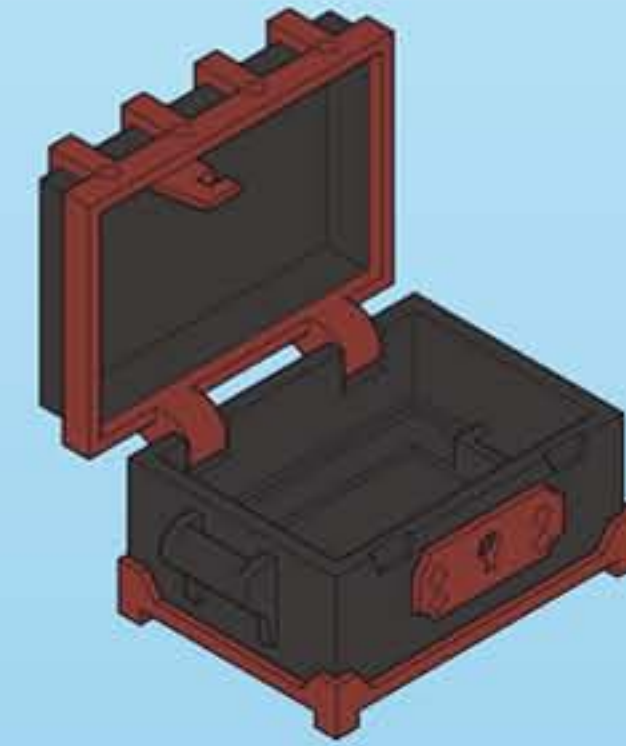
30 66 9430



30 61 3730



30 60 8910



30 66 2370



30 08 3430



2x 30 03 0610



2x 30 51 0080



2x 30 20 9400



30 21 0950



30 21 0940



2x 30 09 1820



2x 30 09 1830



2x 30 09 6420



2x 30 09 5550



5x 30 09 5440



5x 30 03 0890



30 06 0710



30 21 0920



30 09 5650



30 06 3690



30 06 2180



5x 30 07 2800



30 06 3500

Serviceadressen finden Sie in allen Playmobil-Prospekten

Addresses of Customer Service Departments are shown in all Playmobil catalogues

L'adresse du service consommateurs est indiquée dans tous les catalogues Playmobil

Troverete gli indirizzi dei centri di assistenza in tutti i cataloghi Playmobil

Las Direcciones de los Departamentos de Servicio al Consumidor se encuentran en todos los catálogos Playmobil

Η διεύθυνση του Γραφείου Εξυπηρέτησης Πελατών είναι καταχωρημένη σε όλους τους καταλόγους Playmobil

pronounce: plāy-mō-bēēl